

**EXPOSURE TOWARDS INSPECTION OF TWEETS FOR SENSING A
TARGET INCIDENT****M.Praveen¹, U.Sivaji²**¹M.Tech Student, Dept of CSE, St.Martin's Engineering College, Kompally, Hyderabad, A.P, India²Associate Professor, Dept of CSE, St.Martin's Engineering College, Kompally, Hyderabad, A.P, India**ABSTRACT:**

By twitter, an event that is to be sensed was selected as an objective occurrence. Actions similar to earthquakes which are willingly apparent upon evaluation of tweets are under attack and these actions have relatively huge assets. A system of event warning was anticipated that scrutinizes tweets and transport notice devoid of stoppage by acquaintance from exploration. A scheme of earthquake exposure, which is new progression to recommend individuals speedily of an occurrence of seismic activity occurrence, was developed as a function. Estimating system of earthquake caution by scrutinizing emissions of electromagnetic against sensors of ground basis, selection of attempts was carried out. By strategy that is accomplished by machine learning tweets condemning to an intention occasion are taken out and is significant and expensive toward identifying seismic activity within areas of earthquake prone. Elementary sensors comprise a variety of description such as several sensors are stimulated by detailed proceedings, even though others are set in motion by an extensive assortment of measures.

Keywords: Twitter, Event warning, Machine learning, Earthquake, Sensor.

1. INTRODUCTION:

Set of connections bonding individuals communally and involving information flow that link people, explains social communication. These communications sustain relationship and hold various components of relationship together by delicate associations. For the most part of research on Twitter is categorized as examining system association of Twitter, assessment of description of Twitter as a community way, generating novel applications by Twitter [4]. An event that is to be sensed was selected by Twitter as an objective occurrence. By Twitter becoming aware of objective event, at first tweets are crawl mutually by means of keywords which are connected to an objective incident. An incident notice system was proposed that examine tweets and distributes notice devoid of impediment by understanding from examination [8]. Any person is accomplished to hunt for strengthening when that person was left with moderately few seconds' to become conscious in advance to striking of earthquake in an area while specified several advanced vigilance. Tremendous efforts were accomplished on forecast of earthquake in view of seismology. A selection of attempts were

carried out to build temporary forecasts to appreciate system of earthquake caution by scrutinizing emissions of electromagnetic against sensors of ground basis in addition to satellites [1]. By means of concerning a tweet like a sensory assessment connected by position information, occurrence recognition difficulty is concentrated to uncovering of entity and its position on source of sensor evaluation. Happening like earthquake which are enthusiastically comprehensible leading assessment of tweets are under hit and incidents include several properties. Observations of seismic activity were implemented globally facilitating attainment of seismic activity information that moreover makes validation of system of incident finding simple. It is significant and moreover expensive toward identifying seismic activity within areas of earthquake prone. Signifying locality makes available an incorporated procession for region information, make possible us towards generating relevance's which are autonomous concerning usage of sensors while using obviously dissimilar sensors [13]. Approximating of a locality of entity is perhaps main essential responsibility in several situations of persistent calculation. In numerous situations, since social media

were established in industrialized regions, sensors of communal were not uniformly located. We have to integrate geographic allocation of community sensors into spatial representation. When a client identifies a tweet concerning the activity of seismic, adherent concerning that client may possibly formulate tweets concerning that [3]. This attribute is significant since sensor may possibly not be autonomous that have an effect of non consideration in finding of incidence.

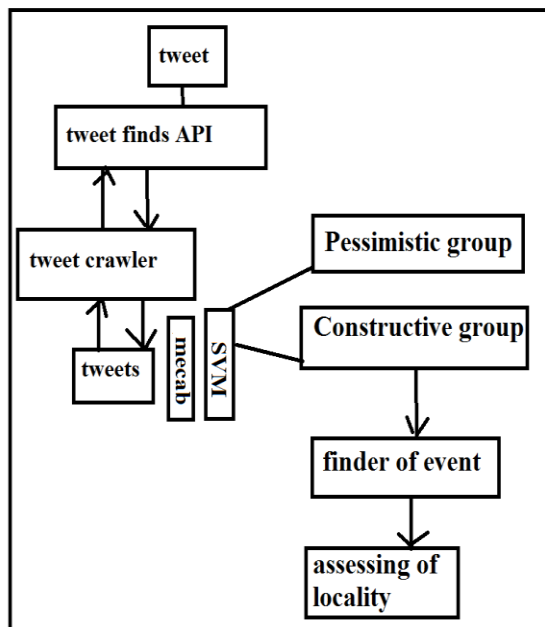


Fig1: An overview of process to obtain tweets referred to a target event accurately.

2. METHODOLOGY:

Social set of communication includes significantly extended collection of achievable connections, authorizes to give out communication, images, and paperwork and uphold link and holds several components of organization by individual associations [14]. For upholding social communications there have to be a likelihood for essential function of system, and have to uphold an equilibrium connecting wholeness inside network. Proceedings like earthquakes which are willingly apparent upon evaluation of tweets are under attack and these actions have relatively huge assets. Estimated locality of earthquake is secure to authentic epicentre of seismic activity, which demonstrates capability of algorithm of position assessment [11]. By Twitter becoming aware of objective event, initially tweets are crawled by means of keywords which are connected to an objective incident [9]. A system of earthquake exposure was progressed by algorithm of event recognition. Earthquake information is significantly vital when it is received in real occasion. Users are familiar with implementation and recurrently familiar with assessment concerning current, users

regularly go back towards site and confirm observing of actions of other persons [7]. Twitter is measured as microblogging provision that making probable users to pass on concise modernizations of wording or micro media like images. Significant quality that is general among microblogging provisions is their instant personality. Several significant occurrences make obvious their instantaneous nature in circumstances of extremely tough seismic activity in Haiti; several images were broadcasted right the way through Twitter. Assortment of efforts were put into practice for building immediate forecasts to appreciate system of earthquake caution by scrutinizing emission from sensors of ground source [2]. Incidents like earthquake which are willingly understandable upon evaluation of tweets are under attack and incidents include several properties. They are of great coverage and for the most part influence daily livelihood of plentiful individuals and comprise in assistance province of spatial and chronological [16]. Such proceedings encompass communal events and also include proceedings of normal for instance seismic activity. Research on twitter can be characterized into individual of three assemblages for instance

analyzing system association of Twitter, assessment of excellence of Twitter as shared resources, building new appliance by Twitter [12]. An examination of synchronized surroundings of Twitter was obtainable that is projected to conclude whether we can receive out convincing information commencing it. An event warning system was projected that scrutinize tweets and transport notice devoid of stoppage by acquaintance from exploration. An occurrence is a subjective categorization of a province of space-time. To become responsive of an intention incidence from Twitter, we search for Twitter and expose helpful tweets [5]. Our system of getting hold of cooperative tweets intentional for objective occurrence exposure is revealed in fig1. In Japan, administration has owed a momentous measure of its economic arrangement to spoil justifying earthquake. Assessment of entity locality is possibly elemental utility of sensing in numerous omnipresent and invasive working out circumstances [15]. Demonstrating location makes available an integrated line for locality information, facilitating us towards generating appliances which are autonomous concerning usage of sensors while using obviously dissimilar sensors. To understand

numerous occurrence identification, have got to construct sophisticated probabilistic representation that put up numerous incident happenings [10]. The fundamental sensors comprise a variety of description such as several sensors are stimulated by detailed proceedings, even though others are set in motion by an extensive assortment of measures. In certainty, untimely forewarning service intended for seismic activity has been administered with JMA providing advance assertions of estimated seismic concentration. Incident may contain actively contributing agent, stationary aspects, and a neighbourhood in space otherwise time [6]. Tweets that positively condemn to an intention occasion are taken out by strategy that is accomplished by machine learning. Objective incident was perceived and estimated position from tweets by treating client as community sensors.

3. RESULTS:

The average of seismic activity is in ocean province which is additionally intricate to point it closely from tweets. It turns out to be complicated to generate superior evaluation in less occupied districts. System of Toretter attentive users and suggests them to get organized for accommodating earthquake. It is accepted that a client get

hold of electronic message preceding to earthquake in actual fact influences that region. Other entities being comparable, higher the numeral of sensors, additional perfects judgment will be. Approximate neighbourhood of earthquake is secure to authentic epicentre of seismic activity, which demonstrates capability of algorithm of position assessment. A scheme of earthquake exposure, which is new progression to recommend individuals speedily of an occurrence of seismic activity occurrence, was developed as a function.

4. CONCLUSION:

In circumstances of extremely tough seismic activity in Haiti; several images were broadcasted right the way through Twitter. Investigation on twitter can be characterized into individual of three assemblages for instance analyzing system association of Twitter, assessment of excellence of Twitter as shared resources, building new appliance by Twitter which is measured as microblogging provision making probable users to pass on concise modernizations of wording. In numerous omnipresent and invasive working out circumstances, assessment of entity locality is possibly elemental utility of sensing. By means of

concerning a tweet like a sensory assessment connected by position information, occurrence recognition difficulty is concentrated to uncovering of entity and its position on source of sensor evaluation.

REFERENCES:

- [1] E. Scordilis, C. Papazachos, G. Karakaisis, and V. Karakostas, "Accelerating Seismic Crustal Deformation before Strong Mainshocks in Adriatic and Its Importance for Earthquake Prediction," *J. Seismology*, vol. 8, pp. 57-70, 2004.
- [2] A. Tumasjan, T.O. Sprenger, P.G. Sandner, and I.M. Wepel, "Predicting Elections with Twitter: What 140 Characters Reveal About Political Sentiment," *Proc. Fourth Int'l AAAI Conf. Weblogs and Social Media (ICWSM)*, 2010.
- [3] B. O'Connor, R. Balasubramanyan, B.R. Routledge, and N.A. Smith, "From Tweets to Polls: Linking Text Sentiment to Public Opinion Time Series," *Proc. Int'l AAAI Conf. Weblogs and Social Media*, 2010.
- [4] X. Liu, S. Zhang, F. Wei, and M. Zhou, "Recognizing Named Entities in Tweets," *Proc. 49th Ann. Meeting of the Assoc. for Computational Linguistics: Human Language Technologies (HLT '11)*, pp. 359-367, June 2011.
- [5] W. Zhu, C. Chen, and R.B. Allen, "Analyzing the Propagation of Influence and Concept Evolution in Enterprise Social Networks Through Centrality and Latent Semantic Analysis," *Proc. 12th Pacific-Asia Conf. Advances in Knowledge Discovery and Data Mining (PAKDD '08)*, pp. 1090-1098, 2008.
- [6] M. Cataldi, L. Di Caro, and C. Schifanella, "Emerging Topic Detection on Twitter Based on Temporal and Social Terms Evaluation," *Proc. 10th Int'l Workshop Multimedia Data Mining (MDMKDD '10)*, pp. 1-10, 2010.
- [7] A. Java, X. Song, T. Finin, and B. Tseng, "Why We Twitter: Understanding Microblogging Usage and Communities," *Proc. Ninth WebKDD and First SNA-KDD Workshop Web Mining and Social Network Analysis (WebKDD/SNA-KDD '07)*, pp. 56-65, 2007.
- [8] M. Arulampalam, S. Maskell, N. Gordon, and T. Clapp, "A Tutorial on Particle Filters for Online Nonlinear/Non-Gaussian Bayesian Tracking," *IEEE Trans. Signal Processing*, vol. 50, no. 2, pp. 174-188, Feb. 2002.
- [9] T. Rattenbury, N. Good, and M. Naaman, "Towards Automatic Extraction of Event and Place Semantics from Flickr Tags," *Proc. 30th Ann. Int'l ACM SIGIR Conf. Research and Development in Information Retrieval (SIGIR '07)*, pp. 103-110, 2007.
- [10] Y. Matsuo and H. Yamamoto, "Community Gravity: Measuring Bidirectional Effects by Trust and Rating on Online Social Networks," *Proc. 18th Int'l Conf. World Wide Web (WWW '09)*, pp. 751-760, 2009.
- [11] K. Borau, C. Ullrich, J. Feng, and R. Shen, "Microblogging for Language Learning: Using Twitter to Train Communicative and Cultural Competence," *Proc. Eighth Int'l Conf. Advances in Web Based Learning (ICWL '09)*, pp. 78-87, 2009.
- [12] P. Serdyukov, V. Murdock, and R. van Zwol, "Placing Flickr Photos on a Map," *Proc. 32nd Int'l ACM SIGIR Conf. Research and Development in Information Retrieval (SIGIR '09)*, pp. 484-491, 2009.
- [13] A. Passant, T. Hastrup, U. Bojars, and J. Breslin, "Microblogging: A Semantic Web and Distributed Approach," *Proc. Fourth Workshop Scripting for the*

Semantic Web (SFSW '08),
<http://data.semanticweb.org/workshop/scripting/2008/paper/11>, 2008.

[14] T. Sakaki, M. Okazaki, and Y. Matsuo, "Earthquake Shakes Twitter Users: Real-Time Event Detection by Social Sensors," Proc. 19th Int'l Conf. World Wide Web (WWW '10), pp. 851-860, 2010.

[15] Q. Mei, C. Liu, H. Su, and C. Zhai, "A Probabilistic Approach to Spatiotemporal Theme Pattern Mining on Weblogs," Proc. 15th Int'l Conf. World Wide Web (WWW '06), pp. 533-542, 2006.

[16] "Tweet Analysis for Real-Time Event Detection and Earthquake Reporting System Development", Takeshi Sakaki, Makoto Okazaki, and Yutaka Matsuo 2013.